



# Are You Getting the Intelligence You Need to Keep Your Company Safe?

In today's world, hyper-local events often set off global repercussions. Most companies have international vendors and operations, globally distributed facilities, on-demand supply chains, and mobile workforces. This level of complexity makes ensuring the safety of your people and the continuity of operations increasingly difficult.





Every day, thousands of potentially critical events take place all over the world. To respond effectively, companies need the full spectrum of available data (vs. a subset), a solid understanding of the events that affect them, and confidence the intelligence they receive is reliable. We refer to this intersection of intelligence quantity and quality as *coverage*.

---

The OnSolve Platform for Critical Event Management™ uses artificial intelligence to provide unparalleled coverage of critical events around the world. In doing so, it leverages three key building blocks:



### **Geographical Coverage**

A mix of hyper-local, regional, national and international sources shed light on global incidents as well as local incidents with global impacts.

### **Event Type Coverage**

Machine learning algorithms search for and identify risk-related incidents spanning more than 50 event types.

### **Multi-Source Coverage**

Clustering of reports from multiple sources ensures validity and facilitates in-depth research of risks.

## Geographical Coverage

OnSolve AI mines a vast array of data sources to provide comprehensive geographical coverage. Our intelligence platform ingests structured and unstructured data from trusted sources including government bureaus, weather and geological services, local and international press, and social media. We integrate the sources that the best security and intelligence professionals in the business rely on. Then we supplement that intelligence with many more sources to provide the most robust global coverage available today.

## Event Type Coverage

OnSolve tracks the 53 classes of events that matter most to companies. Drawing on our expertise in military and disaster management, we combine critical event classifications from the World Health Organization, World Meteorological Organization, FEMA and other government agencies to build a superset of critical event types.

Critical events are classified into three major categories based on whether they are naturally occurring, accidental (unintentional, negligence, etc.), or intentionally caused by humans.

### Natural

A flood, earthquake or other natural event that has financial, operational or safety/security implications for an organizations' vested interests (e.g., people, property/ buildings, product, supply chain, infrastructure)

### Accidental

A malfunction or human error in controlling a technology system (buildings, dams, vehicles, etc.) that has financial, operational or safety/security implications for an organization's vested interests (e.g., people, property/buildings, product, supply chain, infrastructure)



### Human

A crime, military action or other intentional human action that has financial, operational or safety/security implications for an organization's vested interests (e.g., people, property/buildings, product, supply chain, infrastructure)

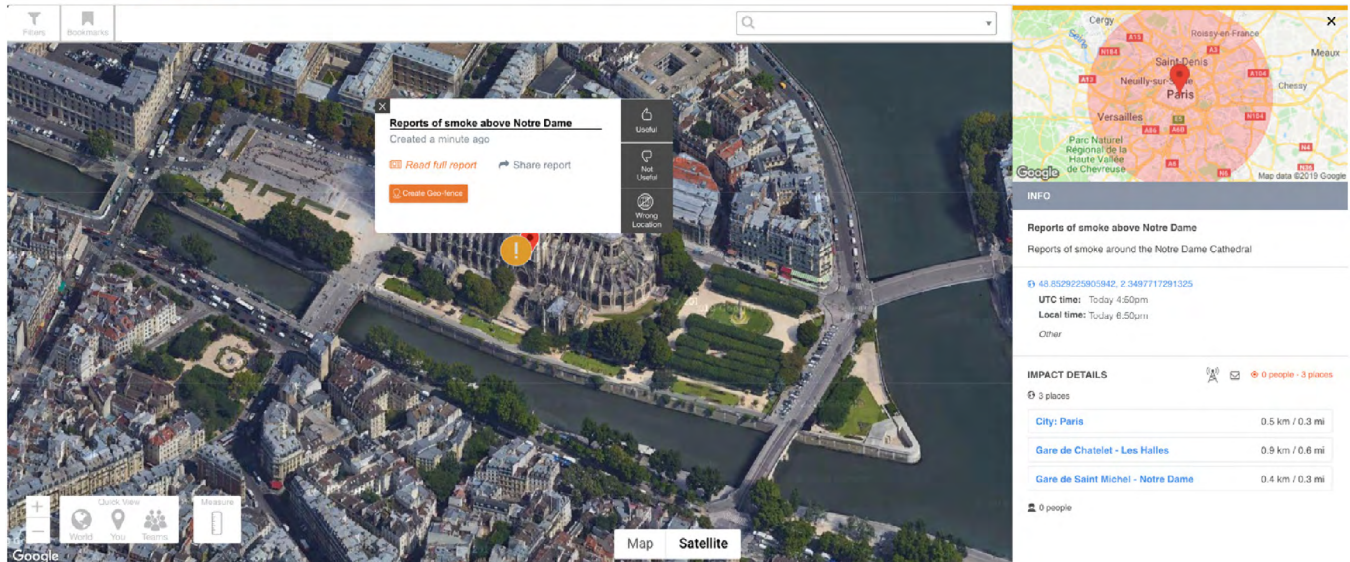
OnSolve further refines this ontology into sub-classes that provide distinct labeling by incident type. Take, for instance, fire. A fire event can range from a controlled burn to a forest fire burning out of control, a chemical explosion, or arson. To mount an effective response, you need to know how to classify the fire event. A robust event taxonomy allows the OnSolve platform to start with the highest order of data (e.g., initial satellite footage of smoke). The platform can then pinpoint a geo-location and quickly parse and overlay information from other sources to characterize the fire type and cause.

## Multi-Source Coverage

With the proliferation of news sources, especially social media, ensuring reliability is more important than ever. If you run a global security operations center or oversee a supply chain, you need to know the alerts you've received are validated before mounting a priority response. By drawing on multiple sources and cross-referencing coverage of a given event, the OnSolve platform delivers intelligence with a high degree of fidelity.

## Bringing It All Together

So, how do geographical coverage, event type coverage, and multi-source coverage combine to provide better intelligence? Consider this time-lapse view of a 2019 fire at Notre Dame cathedral in Paris, France.



- Satellites detect a high volume of smoke in central Paris. The OnSolve platform pulls in this satellite data and its associated geographical coordinates.
- The incident is flagged as a potentially critical event (“fire”), but not yet definitively categorized as “arson” or “accidental.”
- Initial press reports describe the wooden roof beams burning out of control. The OnSolve platform pulls in this data and uses it to make an initial classification of the fire.
- Twitter feeds begin to stream thousands of posts and images of the blaze. OnSolve pulls in Twitter reports from trusted sources and clusters these reports with the ongoing story.
- Later press reports indicate that the fire was likely the cause of an electrical short circuit. The OnSolve platform pulls in this information and uses it to categorize the incident as a structure fire (not “arson”).
- In addition to the initial alert, issued within minutes of detection, clients receive an increasingly rich picture of the incident unfolding. Instead of 200 disparate reports on the fire, they see all relevant coverage clustered into a single event profile.

## Human Assisted AI

One of the biggest pain points we hear from security and operations teams is that it's not possible to track events across every time zone, sort through the noise, and correlate events to the locations of their employees, suppliers, facilities and supply chain nodes, especially when minutes make all the difference. Prior to OnSolve, there wasn't a cost-efficient way to cover all events across the globe or to understand their potential impacts. Now, you have that all in the palm of your hand.

The OnSolve Platform for Critical Event Management consolidates reliable incident data to provide coverage across the 53 classes of critical events that matter most to businesses. As the platform receives additional data, we provide the intelligence on the class of event so that you can anticipate any downstream disruptions and respond accordingly. This comprehensive, validated intelligence enables companies to take responsible action, protecting their people and operations and improving their bottom line.



## The OnSolve Platform for Critical Event Management

[LEARN MORE](#)

### About OnSolve

OnSolve delivers critical event management solutions designed to help enterprises, organizations and agencies of all sizes create the most successful outcomes when critical events occur. The OnSolve Platform for Critical Event Management combines leading risk intelligence, critical communications and incident management into one SaaS-based global portfolio. Our AI-powered platform is purpose-built to deliver fast, relevant and actionable intelligence, enable vital communications and allow response teams to react calmly and confidently.

Visit [OnSolve.com](https://onsolve.com) to learn more.

